

Ball socket:

Zinc base alloy with rubber dust seal

Ball stud:

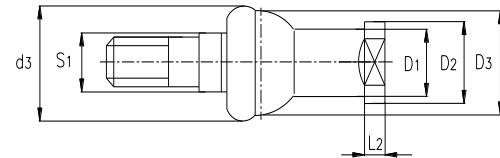
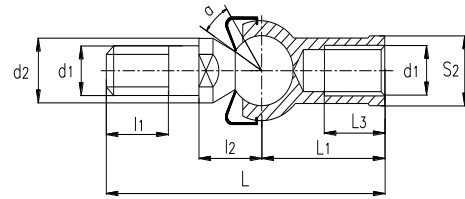
Free-cutting carbon steel

Sliding contact surface:

Steel/zinc alloy, requiring maintenance

球头座: 锌合金带橡胶密封

球头螺栓: 碳钢



Bearing No.	Dimensions millimeters															Load	Weight
型号	尺寸 mm															静负荷	重量
	d1	d2	d3	l1	l2	S1	L	L1	L2	L3	D1	D2	D3	S2	α	stat.	
	6g/6H			min						min						KN	≈kg
SQZ 5 RS	M5	9	19	8	11	7	46	24	4	12	9	11	17	9	15	2.8	0.025
SQZ 6 RS	M6	10	20	11	12.2	8	55.2	28	5	15	10	13	20	11	15	3.7	0.041
SQZ 8 RS	M8	12	24	12	16	10	65	32	5	16	12.5	16	24	14	15	5.8	0.075
SQZ 10 RS	M10×1.25	14	30	15	19.5	11	74.5	35	6.5	18	15	19	28	17	15	8.4	0.12
SQZ 12 RS	M12×1.25	17	32	17	21	15	84	40	6.5	20	17.5	22	32	19	15	11	0.18
SQZ 14 RS	M14×1.5	19	38	22	23.5	17	103	45	8	25	20	25	36	22	11	15	0.27
SQZ 16 RS	M16×1.5	22	44	23	25.5	19	112	50	8	27	22	27	40	22	11	15	0.36
SQZ 18 RS	M18×1.5	23	45	25	31	20	130.5	58	10	32	25	31	45	27	11	19	0.54
SQZ 20 RS	M20×1.5	27	50	25	29	24	133	63	10	38	27.5	34	45	30	7.5	19	0.57
SQZ 22 RS	M22×1.5	27	52	26	33	24	145	70	12	43	30	37	50	32	7.5	23	0.76

Thread: for a left hand thread, add L (example: SQZL..)

螺纹:对左螺纹, 加 L (例如: SQZL..)