

**Housing:**

$d < 90$ : forged, heat-treated carbon steel

$d \geq 90$ : casting, heat-treated carbon steel

**Bearings:** mounted with GE..ES

**Greasing:**

$d \geq 16$ : fitted with hydraulic grease nipples

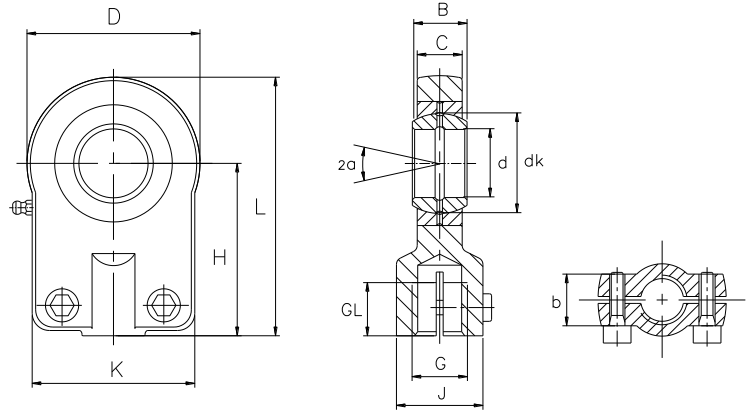
**Sliding contact surface:**

steel/steel, requiring maintenance

**杆端体:**  $d < 90$ : 碳钢, 精锻件;  $d \geq 90$ : 碳钢, 精铸件

**轴承:** 装配 GE..ES 轴承

**渗油:**  $d \geq 16$ : 带油嘴



Bearing No.	Dimensions millimeters													Load ratings		Screw	Weight
型号	尺寸 mm													负荷		锁紧螺钉	重量
	d	B	C	D	H	L	K	J	b	dk	G	GL	α	dyn.	stat.		
			max								6H	min		C (KN)	C <sub>0</sub> (KN)		≈kg
SIQ 12 ES	12	10	8	35	42	59.5	35	17	13	18	M10x1.25	15	10	10.8	17	M6X12	0.12
SIQ 16 ES	16	14	11	45	48	70.5	45	21	13	25	M12x1.25	17	10	21.1	28.5	M6X12	0.22
SIQ 20 ES	20	16	13	55	58	85.5	55	25	17	29	M14x1.5	19	9	30	42.5	M8X16	0.43
SIQ 25 ES	25	20	17	65	68	101	62	30	17	35.5	M16x1.5	23	7	48	67	M8X16	0.67
SIQ 30 ES	30	22	19	80	85	125	77	36	19	40.7	M20x1.5	29	6	62	108	M10X20	1.25
SIQ 40 ES	40	28	23	100	105	155	90	45	23	53	M27x2	37	7	100	156	M10X25	2.16
SIQ 50 ES	50	35	30	120	130	190	105	55	30	66	M33x2	46	6	156	245	M12X30	3.9
SIQ 60 ES	60	44	38	160	150	230	134	68	38	80	M42x2	57	6	245	380	M16X40	8.2
SIQ 80 ES	80	55	47	205	185	288	156	90	47	105	M48x2	64	6	400	585	M20X50	15.6
SIQ 100 ES	100	70	57	240	240	360	190	110	55	130	M64x3	86	7	610	865	M24X55	28

Female thread: for a left hand thread, add L (example: SILQ..)

内螺纹: 对左螺纹, 加 L (例如: SILQ..)