

Housing:

d < 90: forged, heat-treated carbon steel

d ≥ 90: casting, heat-treated carbon steel

Bearings: mounted with GE..ES

Greasing:

fitted with hydraulic grease nipples

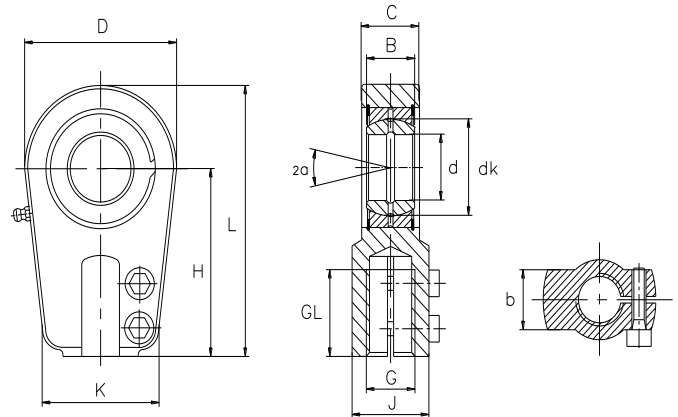
Sliding contact surface:

steel/steel, requiring maintenance

杆端体: d < 90: 碳钢, 精锻件; d ≥ 90: 碳钢, 精铸件

轴承: 装配 GE..ES 轴承

渗油: 带油嘴



Bearing No.	Dimensions millimeters													Load ratings		Screw	Weight
	尺寸 mm													负荷		锁紧螺钉	重量
型号	d	B	C	D	H	L	K	J	b	dk	G	GL	α	dyn.	stat.		
			max								6H	min		C (KN)	C ₀ (KN)		≈kg
SIA 25 ES	25	20	23	56	65	95	48	28	21	35.5	M18x2	30	8	48	72	M8X20	0.62
SIA 30 ES	30	22	28	64	75	109	56	34	26	40.7	M24x2	35	7	62	106	M8X25	0.88
SIA 35 ES	35	25	30	78	90	132	65	45	28	47	M30x2	45	7	80	153	M10X30	1.52
SIA 40 ES	40	28	35	94	105	155	77	57	33	53	M39x3	55	7	100	250	M12X35	2.43
SIA 50 ES	50	35	40	116	135	198	88	70	36	66	M50x3	75	7	156	365	M12X35	4.75
SIA 60 ES	60	44	50	130	170	240	118	87	46	80	M64x3	95	7	245	400	M16X45	8.55
SIA 70 ES	70	49	55	154	195	278	128	110	51	92	M80x3	110	6	315	540	M16X50	12.24
SIA 80 ES	80	55	60	176	210	305	156	128	55	105	M90x3	120	6	400	670	M20X55	18.35
SIA 90 ES	90	60	65	210	250	363	167	152	60	115	M100x3	140	5	490	980	M20X60	31.56
SIA 100 ES	100	70	70	230	275	400	171	170	65	130	M110x4	150	7	610	1,120	M20X60	34
SIA 110 ES	110	70	80	264	300	442	187	180	75	140	M120x4	160	6	654	1,700	M24X75	44
SIA 120 ES	120	85	90	340	360	540	240	210	85	160	M150x4	190	6	950	2,900	M24X85	75

Female thread: for a left hand thread, add L (example: SILA..)

内螺纹:对左螺纹, 加 L (例如: SILA..)