

HEAVY DUTY YOKE TYPE CAM FOLLOWER - NUTR.. SYLB

Outer rings:

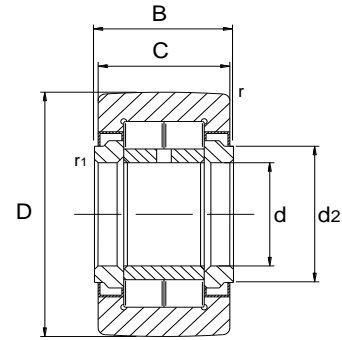
Bearing steel, hardened, ground, polished,
gap seals on both sides

Inner rings:

Bearing steel, hardened, ground, polished,
full complement roller set

外圈: 轴承钢, 淬火, 磨加工, 抛光, 两侧间隙密封

内圈: 轴承钢, 淬火, 磨加工, 抛光, 满滚子配置



Bearing No. 型号	Dimensions in millimeters 尺寸 mm							Properties 性能						We 重
	d	D	B	C	d2	r1	r	Crw	Corw	Fr per	For per	Curw	NDG	
						min	min	KN	KN	KN	KN	KN	1/min	≈
NUTR 15	15	35	19	18	20	0.3	0.6	15	16.8	8.6	16.8	2.22	6500	0.0
NUTR 1542	15	42	19	18	20	0.3	0.6	18.1	21.9	21.9	21.9	2.9	6500	0.1
NUTR 17	17	40	21	20	22	0.5	1	18.4	22.6	13.1	22.6	2.9	5500	0.1
NUTR 1747	17	47	21	20	22	0.5	1	21.3	28	28	28	3.6	5500	0.2
NUTR 20	20	47	25	24	27	0.5	1	28	35	16.4	33	4.4	4200	0.2
NUTR 2052	20	52	25	24	27	0.5	1	31.5	41	38.5	41	5.2	4200	0.3
NUTR 25	25	52	25	24	31	0.5	1	29	37.5	17.3	34.5	4.7	4200	0.2
NUTR 2562	25	62	25	24	31	0.5	1	35.5	50	50	50	6.3	4200	0.4
NUTR 30	30	62	29	28	38	0.5	1	40	50	23.5	46.5	6.3	2600	0.4
NUTR 3072	30	72	29	28	38	0.5	1	47.5	64	64	64	8.1	2600	0.6
NUTR 35	35	72	29	28	44	0.6	1.1	44.5	60	32	60	7.6	2100	0.6
NUTR 3580	35	80	29	28	44	0.6	1.1	51	72	72	72	9.1	2100	0.8
NUTR 40	40	80	32	30	50.5	0.6	1.1	55	75	30.5	60	9.4	1600	0.8
NUTR 4090	40	90	32	30	50.5	0.6	1.1	66	95	84	95	11.9	1600	1.1
NUTR 45	45	85	32	30	55.2	0.6	1.1	56	78	31.5	61	97	1400	0.8
NUTR 45100	45	100	32	30	55.2	0.6	1.1	71	107	106	107	13.3	1400	1.3
NUTR 50	50	90	32	30	59.8	0.6	1.1	57	81	32	62	10.1	1300	0.9
NUTR 50110	50	110	32	30	59.8	0.6	1.1	76	120	120	120	14.9	1300	1.0

Crw: Effective dynamic load rating as track roller (radial)

Corw: Effective static load rating as track roller (radial)

Fr per: Permissible dynamic radial load

For per: Permissible static radial load

Curw: Fatigue limit load

NDG: Speed (for continuous operation and grease lubrication)



ight
量
<g
99
58
47
22
45
21
81
45
65
97
63
36
16
29
83
96
95
69