

**Housing:**

Free-cutting or forged carbon steel, Zinc plated

**Insert:**

Bronze inserted from both sides

**Inner ring:**

Bearing steel, hardened, ground, polished, chrome plated

**Greasing:**

Fitted with hydraulic grease nipples

**Sliding contact surface:**

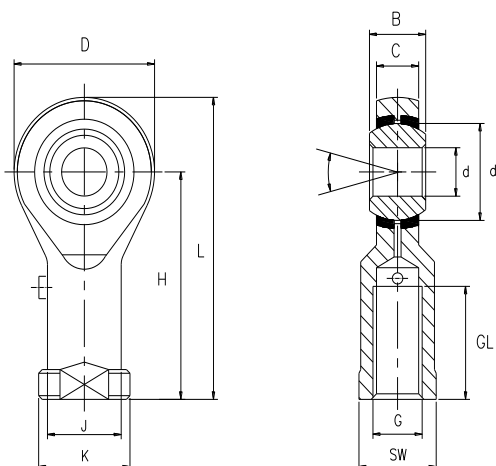
Steel/bronze, requiring maintenance

**杆端体:** 碳钢, 车制件或精锻件, 镀锌

**衬套:** 两面镶嵌入黄铜

**内圈:** 轴承钢, 淬火, 磨加工, 抛光, 镀硬铬

**渗油:** 带油嘴, 油润滑



Bearing No.		Dimensions in inches											Load	Weight	
型号		尺寸 inch											负荷	重量	
	d	B	C	D	H	L	K	J	dk	SW	G	GL	α	stat.	
	+0.015 -0.005	+0.000 -0.005	±0.005	±0.01	±0.031		±0.010	±0.010		±0.010	Thread UNF-3B	+0.062 -0.031		C <sub>0</sub> (Lbf)	≈Lbs
PHSB 3	.1900	.312	.250	.625	1.062	1.3745	.406	.312	.437	.312	10-32	.562	13	1,030	.033
PHSB 4	.2500	.375	.281	.750	1.312	1.687	.468	.375	.515	.375	1/4-28	.750	16	1,730	.055
PHSB 5	.3125	.437	.344	.875	1.375	1.8125	.500	.437	.625	.437	5/16-24	.750	14	1,890	.08
PHSB 6	.3750	.500	.406	1.000	1.625	2.125	.687	.562	.718	.562	3/8-24	.937	12	2,250	.13
PHSB 7	.4375	.562	.437	1.125	1.812	2.3745	.750	.625	.812	.625	7/16-20	1.062	14	2,920	.18
PHSB 8	.5000	.625	.500	1.312	2.125	2.781	.875	.750	.937	.750	1/2-20	1.187	12	4,270	.29
PHSB 10	.6250	.750	.562	1.500	2.500	3.25	1.000	.875	1.125	.875	5/8-18	1.500	16	4,720	.42
PHSB 12	.7500	.875	.687	1.750	2.875	3.75	1.125	1.000	1.312	1.000	3/4-16	1.750	14	6,520	.63
PHSB 16	1.000	1.375	1.000	2.750	4.125	5.5	1.750	1.500	1.875	1.500	1 1/4-12	2.125	17	22,700	2.2

Bearing No.		Dimensions millimeters											Load	Weight	
型号		尺寸 mm											负荷	重量	
	d	B	C	D	H	L	K	J	dk	SW	G	GL	α	stat.	
	+0.038 -0.013	+0.00 -0.13	±0.13	±0.25	±0.79		±0.25	±0.25		±0.25	Thread UNF-3B	+1.57 -0.79		C <sub>0</sub> (KN)	≈kg
PHSB 3	4.826	7.92	6.35	15.88	26.97	34.91	10.31	7.92	11.10	7.92	10-32	14.27	13	4.6	.015
PHSB 4	6.350	9.53	7.14	19.05	33.32	42.85	11.89	9.53	13.08	9.53	1/4-28	19.05	16	7.7	.025
PHSB 5	7.938	11.10	8.74	22.23	34.93	46.04	12.70	11.10	15.88	11.10	5/16-24	19.05	14	8.4	.036
PHSB 6	9.525	12.70	10.31	25.40	41.28	53.98	17.45	14.27	18.24	14.27	3/8-24	23.80	12	10	.061
PHSB 7	11.113	14.27	11.10	28.58	46.02	60.31	19.05	15.88	20.62	15.88	7/16-20	26.97	14	13	.081
PHSB 8	12.700	15.88	12.70	33.32	53.98	70.64	22.23	19.05	23.80	19.05	1/2-20	30.15	12	19	.133
PHSB 10	15.875	19.05	14.27	38.10	63.50	82.55	25.40	22.23	28.58	22.23	5/8-18	38.10	16	21	.19
PHSB 12	19.050	22.23	17.45	44.45	73.03	95.25	28.58	25.40	33.32	25.40	3/4-16	44.45	14	29	.285
PHSB 16	25.400	34.93	25.40	69.85	104.78	139.70	44.45	38.10	47.63	38.10	1 1/4-12	53.98	17	101	1

Female thread: for a left hand thread, add L (example: PHSB..L)

内螺纹:对左螺纹, 加 L (例如: PHSB..L)

