

Housing:

Free-cutting or forged carbon steel, Zinc plated

Insert: free-cutting steel with PTFE

Inner ring:

Bearing steel, hardened, ground, polished, chrome plated

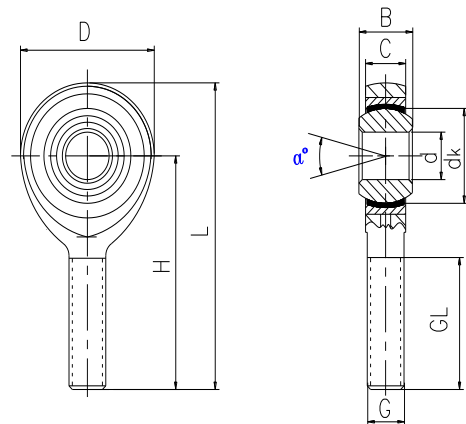
Sliding contact surface:

Steel/PTFE, maintenance free

杆端体: 碳钢, 车制件或精锻件, 镀白锌

衬套: 钢衬, PTFE自润滑

内圈: 轴承钢, 淬火, 磨加工, 抛光或镀铬



Bearing No.	Dimensions inches										Load	Weight
型号	尺寸 inch										负荷	重量
	d	B	C	D	H	L	dk	G	GL	α	stat.	
	+0.015	+0.000	±0.005	±0.010	±0.015			Thread	+0.062		C _o (Lbf)	≈Lbs
	-0.0005	-0.005						UNF-3A	-0.031			
SAZ 3T	.1900	.312	.250	.625	1.250	1.5625	.437	10-32	.750	13	1,169	.028
SAZ 4T	.2500	.375	.281	.750	1.562	1.937	.500	1/4-28	1.000	16	2,158	.043
SAZ 5T	.3125	.437	.344	.875	1.875	2.3125	.625	5/16-24	1.250	14	2,784	.072
SAZ 6T	.3750	.500	.406	1.000	1.938	2.438	.719	3/8-24	1.250	12	3,915	.112
SAZ 7T	.4375	.562	.437	1.125	2.125	2.6875	.812	7/16-20	1.375	14	4,218	.160
SAZ 8T	.5000	.625	.500	1.312	2.438	3.094	.937	1/2-20	1.500	12	6,660	.249
SAZ 10T	.6250	.750	.562	1.500	2.625	3.375	1.125	5/8-18	1.625	16	7,364	.382
SAZ 12T	.7500	.875	.687	1.750	2.875	3.75	1.312	3/4-16	1.750	14	11,518	.602
SAZ 16T	1.000	1.375	1.000	2.750	4.125	5.5	1.875	1 1/4-12	2.125	17	43,541	2.406

Bearing No.	Dimensions millimeters										Load	Weight
型号	尺寸 mm										负荷	重量
	d	B	C	D	H	L	dk	G	GL	α	stat.	
	+0.038	+0.00	±0.13	±0.25	±0.38			Thread	+1.57		C _o (KN)	≈kgs
	-0.013	-0.13						UNF-3A	-0.79			
SAZ 3T	4.826	7.92	6.35	15.88	31.75	39.69	11.10	10-32	19.05	13	5.2	.013
SAZ 4T	6.350	9.53	7.14	19.05	39.67	49.195	12.70	1/4-28	25.40	16	9.6	.020
SAZ 5T	7.938	11.10	8.74	22.23	47.63	58.745	15.88	5/16-24	31.75	14	12.4	.033
SAZ 6T	9.525	12.70	10.31	25.40	49.23	61.93	18.26	3/8-24	31.75	12	17.4	.051
SAZ 7T	11.113	14.27	11.10	28.58	53.98	68.27	20.62	7/16-20	34.93	14	18.8	.073
SAZ 8T	12.700	15.88	12.70	33.32	61.93	78.59	23.80	1/2-20	38.10	12	29.6	.113
SAZ 10T	15.875	19.05	14.27	38.10	66.68	85.73	28.58	5/8-18	41.28	16	32.8	.173
SAZ 12T	19.050	22.23	17.45	44.45	73.03	95.255	33.32	3/4-16	44.45	14	51.2	.273
SAZ 16T	25.400	34.93	25.40	69.85	104.78	139.71	47.63	1 1/4-12	53.98	17	193.7	1.091

Male thread: for a left hand thread, add L (example: SAZL..T)

外螺纹:对左螺纹, 加 L (例如: SAZL..T)

