

Outer ring:

Bearing steel, hardened, ground, phosphate treated
with sealed from both sides

Inner ring:

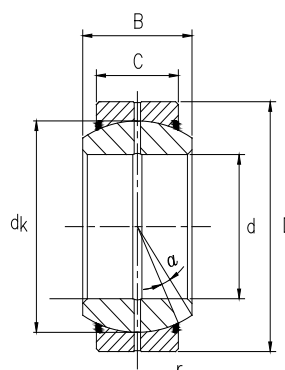
Bearing steel, hardened, ground, phosphate treated

Sliding contact surface:

Steel/steel, requiring maintenance

外圈: 轴承钢, 淬火, 磨加工, 磷化处理
两面带密封圈

内圈: 轴承钢, 淬火, 磨加工, 磷化处理



| Bearing No. 型号 | Dimensions in millimeters 尺寸 mm | | | | | | | Load ratings 负荷 | | Weight 重量 ≈kg |
|-------------------|------------------------------------|------------|-----------|----------|------|-----|----|--------------------|------------------------------|---------------------|
| | d | D | B | C | dk | r | α | dyn. C (KN) | stat. C ₀ (KN) | |
| GE 15 ES 2RS | 15 -0.008 | 26 -0.009 | 12 -0.12 | 9 -0.24 | 22 | 0.3 | 8 | 17 | 85 | 0.026 |
| GE 17 ES 2RS | 17 -0.008 | 30 -0.009 | 14 -0.12 | 10 -0.24 | 25 | 0.3 | 10 | 21.2 | 106 | 0.041 |
| GE 20 ES 2RS | 20 -0.01 | 35 -0.011 | 16 -0.12 | 12 -0.24 | 29 | 0.3 | 9 | 30 | 146 | 0.065 |
| GE 25 ES 2RS | 25 -0.01 | 42 -0.011 | 20 -0.12 | 16 -0.24 | 35.5 | 0.6 | 7 | 48 | 240 | 0.12 |
| GE 30 ES 2RS | 30 -0.01 | 47 -0.011 | 22 -0.12 | 18 -0.24 | 40.7 | 0.6 | 6 | 62 | 310 | 0.15 |
| GE 35 ES 2RS | 35 -0.012 | 55 -0.013 | 25 -0.12 | 20 -0.3 | 47 | 1 | 6 | 80 | 400 | 0.23 |
| GE 40 ES 2RS | 40 -0.012 | 62 -0.013 | 28 -0.12 | 22 -0.3 | 53 | 1 | 7 | 100 | 500 | 0.32 |
| GE 45 ES 2RS | 45 -0.012 | 68 -0.013 | 32 -0.12 | 25 -0.3 | 60 | 1 | 7 | 127 | 640 | 0.41 |
| GE 50 ES 2RS | 50 -0.012 | 75 -0.013 | 35 -0.12 | 28 -0.3 | 66 | 1 | 6 | 156 | 780 | 0.53 |
| GE 55 ES 2RS | 55 -0.012 | 85 -0.013 | 40 -0.12 | 32 -0.3 | 74 | 1 | 7 | 200 | 1,000 | 0.93 |
| GE 60 ES 2RS | 60 -0.015 | 90 -0.015 | 44 -0.15 | 36 -0.4 | 80 | 1 | 6 | 245 | 1,220 | 1 |
| GE 70 ES 2RS | 70 -0.015 | 105 -0.015 | 49 -0.15 | 40 -0.4 | 92 | 1 | 6 | 315 | 1,560 | 1.50 |
| GE 80 ES 2RS | 80 -0.015 | 120 -0.015 | 55 -0.15 | 45 -0.4 | 105 | 1 | 6 | 400 | 2,000 | 2.2 |
| GE 90 ES 2RS | 90 -0.02 | 130 -0.018 | 60 -0.2 | 50 -0.5 | 115 | 1 | 5 | 490 | 2,450 | 2.70 |
| GE 100 ES 2RS | 100 -0.02 | 150 -0.018 | 70 -0.2 | 55 -0.5 | 130 | 1 | 7 | 610 | 3,050 | 4.3 |
| GE 110 ES 2RS | 110 -0.02 | 160 -0.025 | 70 -0.2 | 55 -0.5 | 140 | 1 | 6 | 655 | 3,250 | 4.70 |
| GE 120 ES 2RS | 120 -0.02 | 180 -0.025 | 85 -0.2 | 70 -0.5 | 160 | 1 | 6 | 950 | 4,750 | 8 |
| GE 140 ES 2RS | 140 -0.025 | 210 -0.03 | 90 -0.25 | 70 -0.6 | 180 | 1 | 7 | 1,080 | 5,400 | 11.00 |
| GE 160 ES 2RS | 160 -0.025 | 230 -0.03 | 105 -0.25 | 80 -0.6 | 200 | 1 | 8 | 1,370 | 6,800 | 14 |
| GE 180 ES 2RS | 180 -0.025 | 260 -0.035 | 105 -0.25 | 80 -0.7 | 225 | 1.1 | 6 | 1,530 | 7,650 | 18.20 |
| GE 200 ES 2RS | 200 -0.03 | 290 -0.035 | 130 -0.3 | 100 -0.7 | 250 | 1.1 | 7 | 2,120 | 10,600 | 28.3 |
| GE 220 ES 2RS | 220 -0.03 | 320 -0.04 | 135 -0.3 | 100 -0.8 | 275 | 1.1 | 8 | 2,320 | 11,600 | 35.40 |
| GE 240 ES 2RS | 240 -0.03 | 340 -0.04 | 140 -0.3 | 100 -0.8 | 300 | 1.1 | 8 | 2,550 | 12,700 | 39.4 |
| GE 260 ES 2RS | 260 -0.035 | 370 -0.04 | 150 -0.35 | 110 -0.8 | 325 | 1.1 | 7 | 3,050 | 15,300 | 51.10 |
| GE 280 ES 2RS | 280 -0.035 | 400 -0.04 | 155 -0.35 | 120 -0.8 | 350 | 1.1 | 6 | 3,550 | 18,000 | 64.6 |
| GE 300 ES 2RS | 300 -0.035 | 430 -0.045 | 165 -0.35 | 120 -0.9 | 375 | 1.1 | 7 | 3,800 | 19,000 | 77.30 |