

Outer ring:

Bearing steel

d = 5: without lubrication groove and hole

Insert:

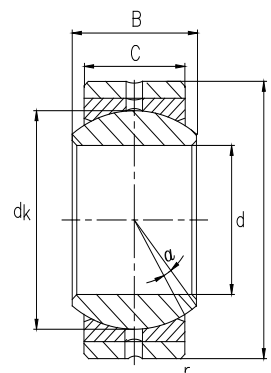
Bronze inserted from both sides

Inner ring:

Bearing steel, hardened, ground, polished

Sliding contact surface:

Steel/bronze, requiring maintenance



外圈: 轴承钢, d = 5: 无油槽, 无油孔

衬套: 两面镶嵌入黄铜, 油润滑

内圈: 轴承钢, 淬火, 磨加工, 抛光

Bearing No.	Dimensions in millimeters							Load ratings		Weight	
型号	尺寸 mm							负荷		重量	
	d	D	B	C	dk	r	α	dyn. C (KN)	stat. C ₀ (KN)	≈kg	
GEBK 5 S	5	+0.012	16 -0.008	8 -0.12	6 -0.24	11.1	0.3	13	3.3	7.8	0.009
GEBK 6 S	6	+0.012	18 -0.008	9 -0.12	6.75 -0.24	12.7	0.3	13	4.3	9.8	0.013
GEBK 8 S	8	+0.015	22 -0.009	12 -0.12	9 -0.24	15.8	0.3	13	7.1	16	0.024
GEBK 10 S	10	+0.015	26 -0.009	14 -0.12	10.5 -0.24	19	0.3	13	10	23	0.039
GEBK 12 S	12	+0.018	30 -0.009	16 -0.12	12 -0.24	22.2	0.3	13	13.5	31	0.058
GEBK 14 S	14	+0.018	34 -0.011	19 -0.12	13.5 -0.24	25.4	0.3	15	17	40	0.084
GEBK 16 S	16	+0.018	38 -0.011	21 -0.12	15 -0.24	28.5	0.3	15	21.5	50	0.111
GEBK 18 S	18	+0.018	42 -0.011	23 -0.12	16.5 -0.24	31.7	0.3	15	26	61	0.16
GEBK 20 S	20	+0.021	46 -0.011	25 -0.12	18 -0.24	34.9	0.6	15	31.5	73	0.21
GEBK 22 S	22	+0.021	50 -0.011	28 -0.12	20 -0.24	38.1	0.6	15	38	88	0.26
GEBK 25 S	25	+0.021	56 -0.013	31 -0.12	22 -0.24	42.8	0.6	15	47	110	0.39
GEBK 28 S	28	+0.021	62 -0.013	35 -0.12	25 -0.24	47.63	0.6	15	59	138	0.53
GEBK 30 S	30	+0.021	66 -0.013	37 -0.12	25 -0.3	50.8	1	15	64	148	0.61
GEBK 35 S	35	+0.025	78 -0.013	43 -0.12	28 -0.3	57.1	1	16	80	240	0.85
GEBK 40 S	40	+0.025	87 -0.015	49 -0.15	33 -0.4	66.6	1	17	116	310	1.4