

**Housing:**

Free-cutting or forged carbon steel, Zinc plated

**Insert:**

Bronze inserted from both sides

**Inner ring:**

Bearing steel, hardened, ground, polished

**Greasing:**

Fitted with hydraulic grease nipples

**Sliding contact surface:**

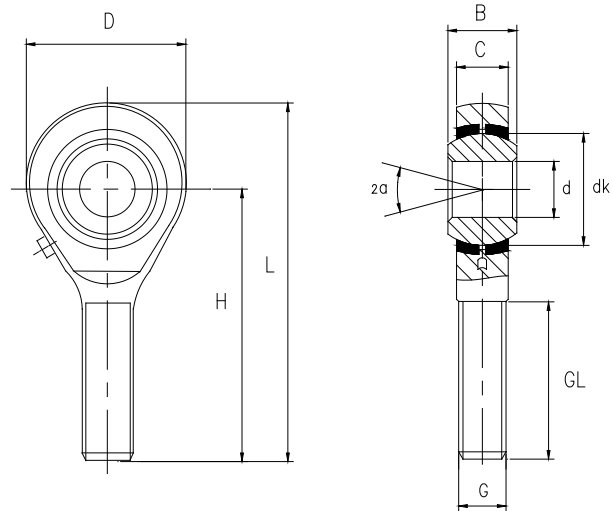
Steel/bronze, requiring maintenance

**杆端体:** 碳钢, 车制件或精锻件, 镀白锌

**衬套:** 两面镶嵌入黄铜

**内圈:** 轴承钢, 淬火, 磨加工, 抛光

**渗油:** 带油嘴, 油润滑



Bearing No. 型号	Dimensions millimeters 尺寸 mm										Load ratings 负荷		Weight 重量
	d	B	C	D	H	L	dk	G	GL	$\alpha$	dyn. C (KN)	stat. C <sub>0</sub> (KN)	
			max					6g	min				
POS 5	5	8	6	16	33	41	11.1	M5	20	13	3.3	3.4	0.013
POS 6	6	9	6.75	18	36	45	12.7	M6	22	13	4.3	4.8	0.02
POS 8	8	12	9	22	42	53	15.9	M8	25	14	7.1	8.8	0.03
POS 10	10	14	10.5	26	48	61	19	M10	29	13	10	13.6	0.055
POS 12	12	16	12	30	54	69	22.2	M12	33	13	13.5	17	0.085
POS 14	14	19	13.5	34	60	77	25.4	M14	36	16	17	21	0.14
POS 16	16	21	15	40	66	86	28.5	M16	40	15	21.5	26	0.21
POS 18	18	23	16.5	44	72	94	31.7	M18×1.5	44	15	26	31	0.28
POS 20	20	25	18	50	78	103	34.9	M20×1.5	47	14	31.5	36	0.38
POS 22	22	28	20	54	84	111	38.1	M22×1.5	51	15	38	43	0.48
POS 25	25	31	22	60	94	124	42.9	M24×2	57	15	47	63	0.64
POS 28	28	35	25	66	103	136	47.6	M27×2	62	15	60	77	0.96
POS 30	30	37	25	70	110	145	50.8	M30×2	66	17	64	82	1.1

Male thread: for a left hand thread, add L (example: POS..L)

外螺纹: 对左螺纹, 加 L (例如: POS..L)

